





## LS-R MAGGIA und LOSTALLO (4'000ft AMSL – 10'000ft AMSL)

Circle of 7km radius, centered at:



### Area Maggia

ELEV 5347FT

WGS84: 46°15'47"N 008°38'43"E

NO RESTRICTIONS SSW OF LINE

46°16'10"N 008°33'36"E - 46°15'27"N

008°37'10"E - 46°12'43"N 008°41'43"E



### Area Lostalio

ELEV 5060FT

WGS84: 46°17'20"N 009°09'26"E

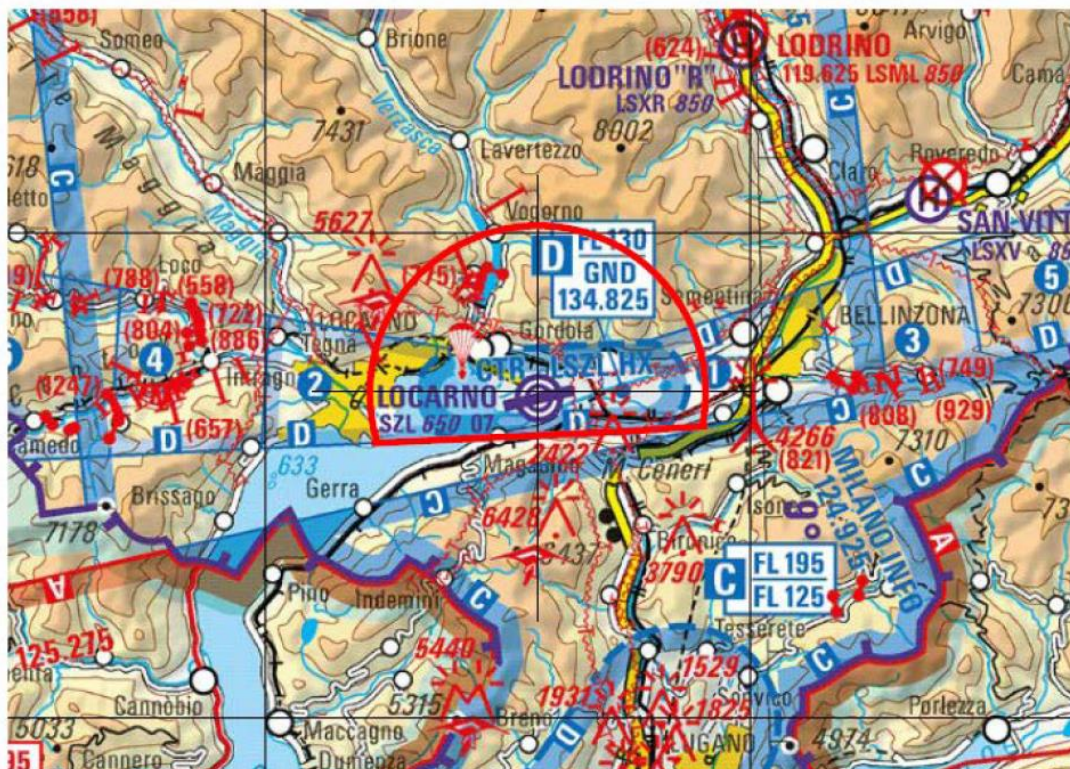
TMA LSZL NOT AFFECTED.

## LS-R Flugplatz Locarno (GND – 8'000ft AMSL)

Semi-circle of 7km radius

centered at LSZL/Locarno AD (WGS84: 46°10'00"N 008°52'48"E; ELEV 650FT)

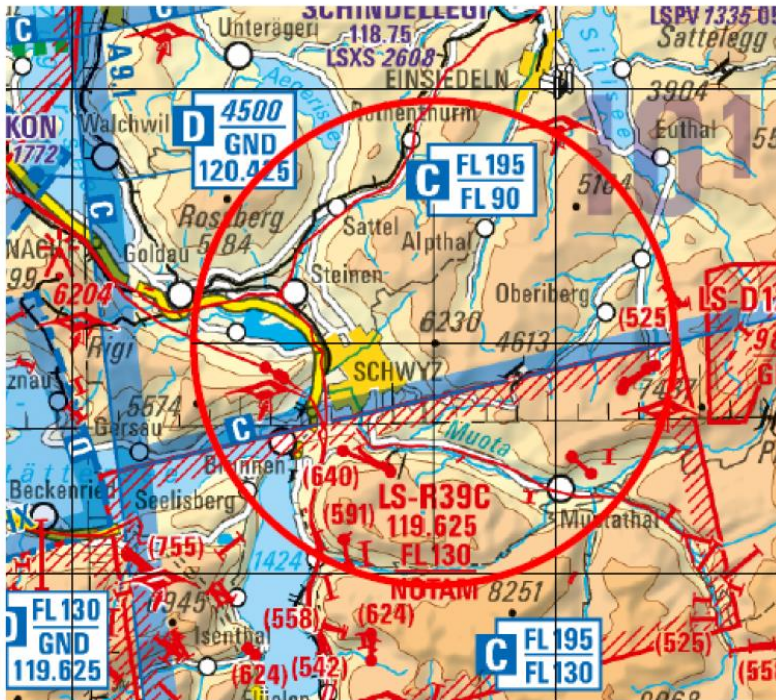
NO RESTRICTION S OF SOUTHERN TMA BORDERLINE.





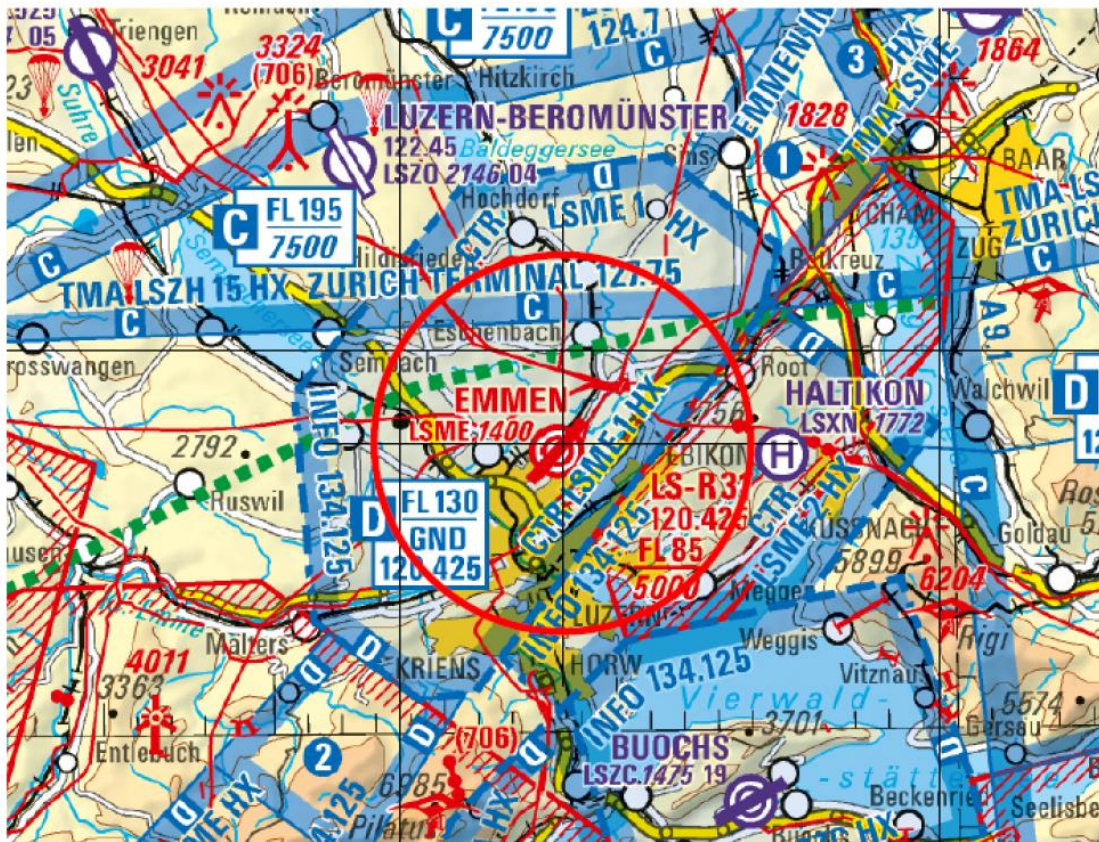
**LS-R MYTHEN (3'000ft AMSL – FL90) (INFO: LS-R SCHWÄGALP existiert nicht mehr)**

Circle of 10km radius,  
centered at Gross Mythen (WGS84: 47°01'48"N / 008°41'20"E, ELEV 6230FT).



# LS-R EMMEN LOW (GND – 6'500ft AMSL)

Circle of 7km radius,  
centered at TWY C at AD Emmen (WGS84: 47°05'51"N / 008°18'35"E, ELEV 1390FT).



#### 4.7 Aktivierungszeiten LS-R (alles Lokalzeiten)

	Datum	Schraffen low	Emmen low	Maggia/ Lostalio	Fipl LOC	Mythen
KW17	23.04.19	1330-1430 1545-1645	-	-	-	1330-1430 1545-1645
	24.04.19	0815-0915 1045-1145 1445-1545	-	-	-	0815-0915 1045-1145 1445-1545
	25.04.19	0815-0915 1045-1145 1445-1545	-	-	-	0815-0915 1045-1145 1445-1545
	26.04.19	0815-0915 1045-1145	0845-0915 1100-1130	-	-	0815-0915 1045-1145
KW18	29.04.19	-	-	1330-1430 1545-1645	-	-
	30.04.19	-	-	0830-0930 1045-1145 1415-1515	-	-
	02.05.19	-	-	0830-0930 1045-1145 1415-1515	0845-0915 1100-1130 1445-1515	-
	03.05.19	-	-	0830-0930 1045-1145	0845-0915 1100-1130	-
KW19	06.05.19	-	-	-	-	1045-1145 1415-1515
	07.05.19	-	1525-1605	-	-	0830-0930 1045-1145 1515-1615
	08.05.19	-	-	-	-	0830-0930 1045-1145 1415-1515
	09.05.19	-	-	-	-	0830-0930 1045-1145 1415-1515
	10.05.19	-	-	-	-	0830-0930 1045-1145 1415-1515